

PRTK 6.4 & DNA 3.4

Release Notes

These Release Notes apply to the DNA 3.4 and the PRTK 6.4 releases.

Important: Please uninstall any existing versions of PRTK and DNA before installing either PRTK 6.4 or DNA 3.4. Save Custom Dictionaries, Profiles, Groups, and User-defined Levels from previous versions before uninstalling.

NEW AND IMPROVED

This release of PRTK and DNA contains the following fixes and updates:

- The Worker Installer is now an .MSI file instead of an .EXE file. The new file is found at
[drive]:\Program Files\AccessData\DNA 3\Supervisor\WorkerInstall.msi.
Please view the installation instructions under the heading **Other Considerations** following Known Issues.
- Browse buttons: Anytime you see a Browse button in any dialog, it indicates you need additional information to perform the selected task. Clicking Browse automatically open the Windows Explorer window in the same folder previous information or files were added from.
- Worker update process has changed with the implementation of the WorkerInstall.msi. The new process updates the worker using the WorkerInstall.msi file and utilizes the Microsoft Group Policy functionality to

distribute and update the worker. You can manually install the workers if you do not have the ability to utilize the Microsoft Group Policy. See Chapter 2 of the PRTK and DNA User Guide for installation instructions.

Setting up a group policy: Workers should be set up on a domain that will allow a group policy to be utilized to push a newer version of the worker down to the specified machines.

A group policy should then be created from the domain server with the **WorkerInstall.msi** that will push the worker out to the existing or new clients.

Note: See Microsoft Group Policy instructions on how to set up the policy. There is a document on Microsofts website called “Introduction to Group Policy in Windows Server 2003” that gives a good overview of Group Policy.

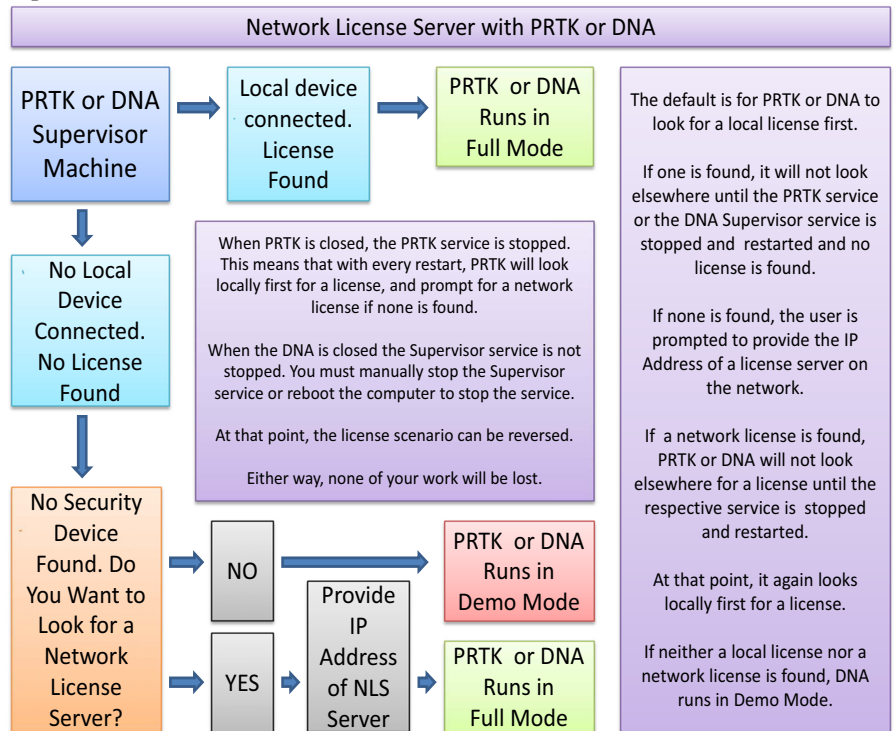
- Worker Installer for PS3 is now available. Please view the installation instructions under the heading **Other Considerations** following Known Issues.
- Case Management
 - **Rules:** Levels are now called Rules. There is a significant change to the Rules interface.
 - **Rules:** The user now has the ability to use any dictionary with any given Rule.
 - **New Profiles:** There is a now ability to pattern a new profile after an existing profile.
 - **Drop Folders:** The location where you can place files to be automatically picked up by DNA
 - **Generate Report:** The user can now generate DNA or PRTK reports in both DNA and PDF formats.
 - **Network License Server:** Both PRTK and DNA now have the ability to utilize an AccessData Network License Server
 - **View Workers Information:** New dialog, more functionality.
 - **Job Wizard:** Attack types can be saved so they can be applied to like file types.
 - **Resizable dialogs:** Dialogs can now be resized to meet your needs.

KNOWN ISSUES

- **Worker update on Vista machines:** To update a worker from the 3.3.3 worker or earlier on Windows Vista, the user must manually uninstall the worker using the Windows Control Panel. At that point a worker can be put on the machine either Manually or through the Group Policy feature from a Windows Domain.

- **NLS Support:** If NLS is activated, local Wibu CmSticks or Keylok dongles are no longer automatically recognized by PRTK or DNA, and when connected, PRTK or DNA will run in demo mode.
- **Workaround:**
 - Stop both the DNA supervisor and worker services, connect the dongle and then start the supervisor and worker services, then DNA uses the local dongle and not the license from the nls server.
 - Close PRTK to stop the PRTK service. Connect the local dongle, and run PRTK again. This will cause PRTK to read the local dongle instead of the NLS license. This is illustrated in the following figure:

Figure ReleaseNotes-1 How NLS Works with PRTK or DNA



- **Uninstalling a Worker on the Supervisor machine:** There is an issue when uninstalling a worker that has been installed on the same machine as a Supervisor. You may see “Error 1313. Could not update the .INI file C:\Documents and

Settings\AccessDta\PR\Worker.ini. Verify that the file exists and that you can access it.”

- **Solution:** Shut down the Supervisor service before attempting to uninstall a worker.

OTHER CONSIDERATIONS

DNA WORKER INSTALL ON A WINDOWS BOX USING THE .MSI FILE

Before you begin this installation, the Supervisor folder on the Supervisor machine should be shared to allow worker machines to remotely access it for running the DNA Worker installation. This worker cannot currently be installed silently.

Important: You must not compress the Worker.ini file.

SHARING THE SUPERVISOR DIRECTORY

If the directory isn't already shared and you plan to install the workers by attaching to the Supervisor machine to access the install file, complete the following:

1. In Windows Explorer, navigate to the [*drive*]: Program Files\AccessData\DNA 3\ directory. Right-click the \Supervisor\ directory and select *Sharing*.
2. In the Sharing tab, select *Shared As*.
3. (Optional) Enter any additional information in the Sharing tab fields that you want to require of the client workstations before they can access the directory.

Note: The WorkerInstall.msi file is a fully self-contained worker install file. It can be copied to a thumb drive or other portable media, or copied to a network shared location. The point is, all Windows machines that will run a DNA Worker must have access to this file.

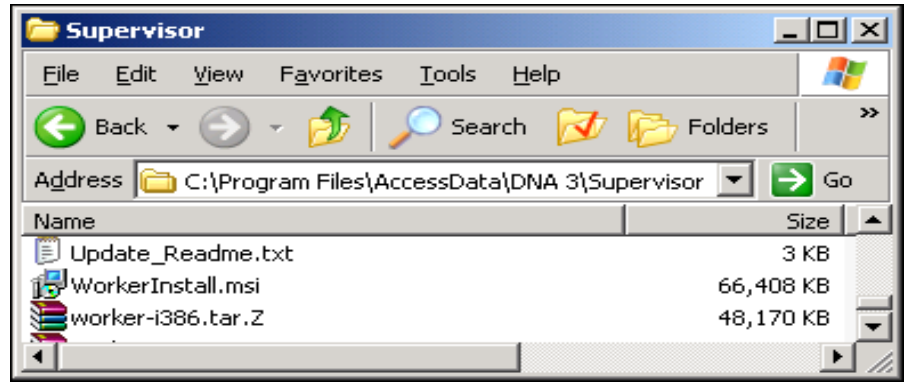
NEW WORKER INFORMATION FOR THE DNA 3.4 RELEASE

Workers are now installed with WorkerInstall.msi rather than the WorkerInstall.exe. To install the worker on a Windows workstation, do the following:

New workers update via Group Policy when the worker machine is rebooted.

1. On the Windows workstation, browse to the shared Supervisor directory and either double-click WorkerInstall.msi on the Supervisor machine, or copy the WorkerInstall.msi to the local worker machine, and execute it there. You can also right click on the WorkerInstall.msi file and choose *Install*.

Figure ReleaseNotes-2




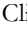
2. Click *Next* on the Welcome screen.
3. Click *Yes* to accept the license agreement, then click Next.
4. Click *Next* on the Supervisor Information screen.

Important: Do not change any of the values, unless you want to connect this worker to a different supervisor.

5. Click *Install* to proceed with the worker installation.
6. Click *Finish* to complete the installation of the worker.

After the installation is complete, the DNA worker service runs automatically in the background, listening for Supervisor communication.

If you run **worker.exe** from the Worker or the Supervisor folder, the Worker icon  appears in the System Tray.

Clicking the  icon opens the DNA Worker Status screen. For more information about the DNA Worker Status screen, see “DNA Worker Interface” on page 67.

The worker interface shows workers that are older than the current version of DNA with a light red background.

Important: All workers will need to be updated to the latest version for the shipping build of DNA as there have been numerous changes which will not allow an older worker to process jobs. Any workers that were set up with a Beta version of 3.4 should also be updated.

Existing DNA 3.3.3 workers will uninstall automatically.

Worker update is accomplished through a Group Policy.

SETTING UP A GROUP POLICY.

Workers should be set up on a domain that will allow a group policy to be utilized to push a newer version of the worker down to the specified machines.

A group policy should then be created from the domain server with the `WorkerInstall.msi` that will push the worker out to the existing or new clients.

Note: See Microsoft Group Policy instructions on how to set up the policy. There is a document on Microsoft's website called Introduction to Group Policy in Windows Server 2003 that gives a good overview of Group Policy.

DNA WORKER INSTALLATION ON A SONY PLAYSTATION 3

To install the DNA Worker on a Sony Playstation 3 (PS3), complete the following steps as user root at the command line on the target Linux machine:

TO INSTALL A PS3 WORKER:

Prior to worker installation you must have OpenSuSE 11 Power-PC installed as the active operating system on the PS3 box.

Installing the DNA Worker on a PS3 System:

1. `scp worker-powerpc-install.sh [PS3 box name]`: directory on the PS3
You will be prompted for your user password.
By default, the folder is copied to the `/home/[username]` folder.
2. Once copied, logon to the box by typing `ssh user@[box_name]` and switch to the root user:
`su` (prompts for password, if applicable).
3. Change directory to the folder you copied `worker-powerpc-install.sh` to, such as:
`cd /home/[user_name]`
4. Install the worker by running
`sh worker-powerpc-install.sh install.`
5. Go to the `/opt/Accessdata/DNA3/Worker` folder by typing
`cd /opt/AccessData/DNA3/Worker.`
6. Run the Worker by typing `./dna3workerd start`
Once running, the worker on this PS3 box should display with the IP address and name of the machine on the Supervisor.

To stop the worker service:

Run the following command from the AccessData folder to stop the worker service:

```
./dna3workerd stop
```

Should you need to uninstall the worker:

1. Run `./dna3workerd stop` from the `/opt/AccessData.DNA3/Worker` directory
2. Change to the `/Home/[username]` directory
3. Type
`sh worker-powerpc-install.sh uninstall`

